

# Connecting Accessories to the NI SPEEDY-33

This document describes third-party accessory connections for the NI SPEEDY-33 and Infinity Technology Kits.

Refer to Figure 1 to connect accessories to the NI SPEEDY-33 as described in Table 1.

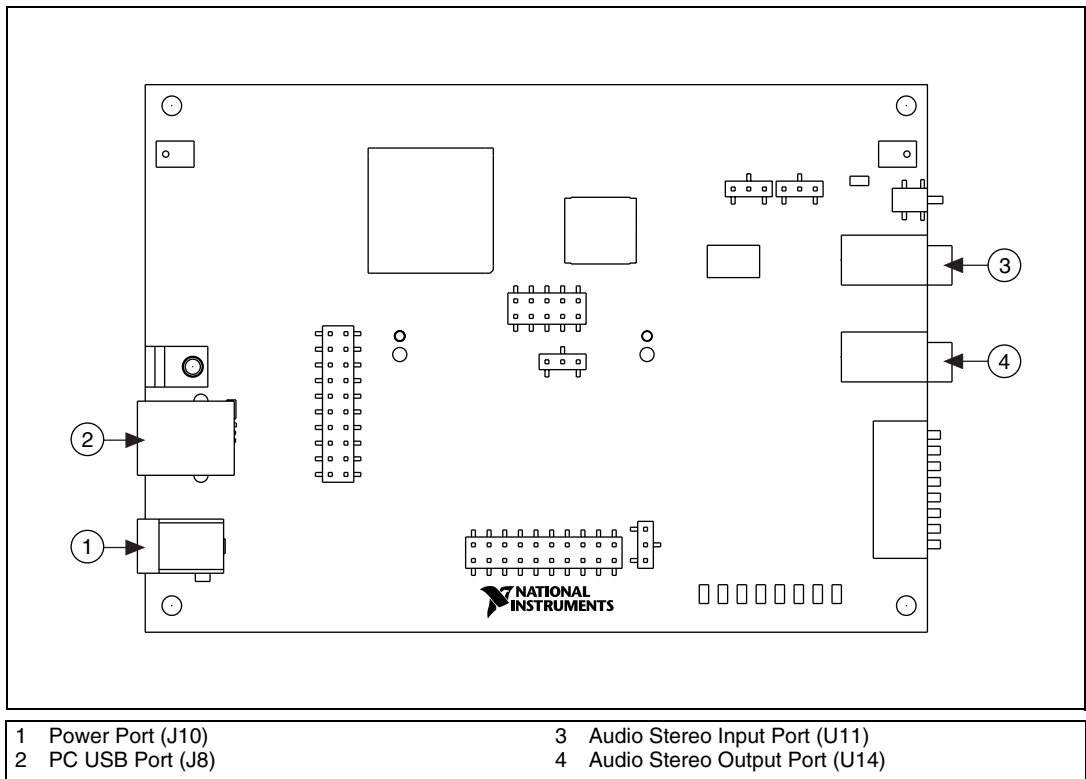


Figure 1. NI SPEEDY-33



**Caution** Do *not* connect the power source to the power port while the NI SPEEDY-33 device is connected to the PC.

**Table 1.** NI SPEEDY-33 Accessories

Accessory	NI SPEEDY-33 Port
Microphone, CD player, MP3 player, PDA, cell phone, or any peripheral with mini jack connector output	Audio stereo input port
Audio speakers (included with Infinity Technology Kit) or any audio speakers or headphones with mini jack connector input	Audio stereo output port
Any 9 VDC at 500 mA power port with appropriate safety and EMC Certification marks, which are acceptable in the country in which the product is to be installed	Power port

## Connecting, Configuring, and Testing the Video Camera with VAB (Infinity Technology Kit Users Only)

The VAB software supports video input. Complete the following steps to configure your computer to work with a video camera.

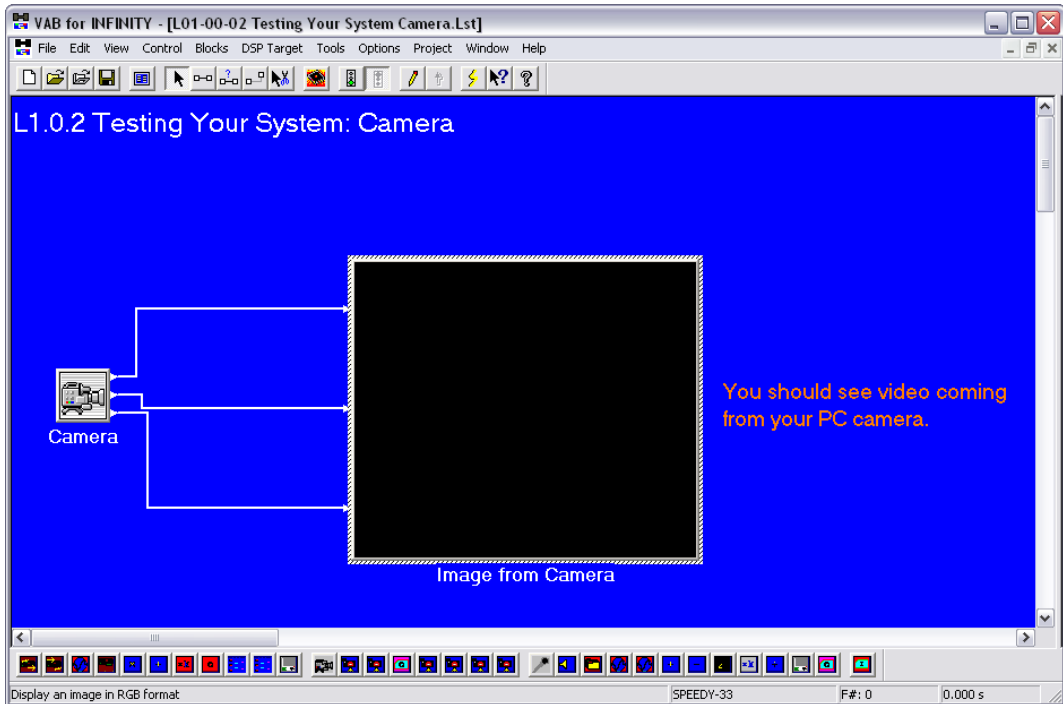
1. Log on as an administrator or as a user with administrator privileges.
2. Insert the PC Camera installation CD in the CD drive.
3. Click the **Install Camera Driver** button.

The Camera Hardware Wizard install screen opens.

4. Click the **M6225** button and follow the instructions that appear on the screen.
5. After the software and drivers have been installed, click the **Finish** button.
6. Click the **EXIT** button.
7. Connect the camera USB cable to a USB port on your PC.
8. Configure the camera software and driver. Windows 2000 will find the software automatically. Windows XP will launch the Found New Hardware Wizard. Follow the driver configuration instructions for Windows XP in the *NI SPEEDY-33 Installation Guide*.
9. Verify that the NI SPEEDY-33 is connected to another USB port on the PC.
10. Launch VAB.
11. Click the **Open Examples** button, shown at left, on the VAB tool bar. Select the **Chapter 1** tab and **L01-00-02 Testing Your System Camera**.



The Testing Your System Camera worksheet will open.



12. Run the active worksheet by clicking **Run** button, shown at left, on the VAB tool bar.

The Camera block on the VAB block worksheet will display a live video image from the camera. The Image from Camera block will display the same video image from the NI SPEEDY-33.



13. After you have established that the camera and NI SPEEDY-33 are connected and configured properly, click the **Stop** button, shown at left, on the VAB tool bar.
14. Exit VAB. Do not save changes to the worksheet.

National Instruments, NI, ni.com, and LabVIEW are trademarks of National Instruments Corporation. Refer to the *Terms of Use* section on [ni.com/legal](http://ni.com/legal) for more information about National Instruments trademarks. Other product and company names mentioned herein are trademarks or trade names of their respective companies. For patents covering National Instruments products, refer to the appropriate location: **Help>Patents** in your software, the `patents.txt` file on your CD, or [ni.com/patents](http://ni.com/patents).